

C/O Jenn Carr  
222 Hartford Ave.  
Brooklyn, CT 06234



Russell Rescue, Inc. Trial  
*proceeds to benefit Russell Rescue, Inc.*

Saturday, August 7, 2010



Huntington Hunt Trial  
Sunday, August 8, 2010

### Judges

Conformation Saturday: Lisa Drinkwater

Conformation Sunday: Brent Hopkins

GTG: David Ross / Andy Burigo SE: Doug Loranger

Racing \* Barn Hunt \* Trailing and Locating

Lure Coursing \* Agility \* Ball Retrieval

Hebron Lions Fairgrounds  
Route 85  
347 Gilead Street  
Hebron, Connecticut 06248  
[www.hebronharvestfair.org](http://www.hebronharvestfair.org)

Co-Chairperson Russell Rescue  
Jenn Carr 860-779-2613  
[jrthns@aol.com](mailto:jrthns@aol.com)

Co-Chairperson Huntington  
Hunt  
Lisa Benoit 401-658-4907  
[oceanstatejacks@cox.net](mailto:oceanstatejacks@cox.net)

Co-Chairperson Russell Rescue  
Kim Loar 717-299-4040  
[jrrescuepa@mindspring.com](mailto:jrrescuepa@mindspring.com)

Co-Chairperson Huntington Hunt  
Joanne Guilmain 401-647-5851  
[huntersglenjrt@aol.com](mailto:huntersglenjrt@aol.com)

**Sanctioned by the JRTCA.  
Exhibitors and owners of terriers must be current  
JRTCA members.**

## Directions to the Hebron Fairgrounds!

**From South on I-91 or West on I-84:** Take I 91 to CT Route 3 (exit 25) east to CT Route 2 toward Glastonbury. From CT Route 2, take exit #8 (CT Route 94). At end of ramp, go LEFT (east) on CT Route 94 for 9.1 miles. Stay straight and CT 94 turns into CT 85. Continue for 3.1 miles to the Hebron Fairgrounds on the right.

**From East on I-84:** Take Exit 70, CT 32 south for 14.4 miles to US route 6 west for 2.4 miles. Bear left as US 6 becomes CT 66. Take CT 66 for 6.4 miles to CT 85. Turn right (north) on CT 85 for 1.7 miles. Hebron Fairgrounds are on the left.

**From Southern New England:** Take US 6 east to CT 66. Take CT 66 east for 6.4 miles to CT 85. Turn right (north) on CT 85 for 1.7 miles. Hebron Fairgrounds are on the left.

**Please enter the fairgrounds at Gate A only!**

---

**Places to stay:** Rates subject to change!

Please make your reservations early as rooms book quickly!

**COMFORT INN** (formerly the Best Western Inn)  
1330 Silas Deane Hwy. Wethersfield CT 860 563 2311  
10 rooms blocked for the Yankee JRT Network. \$89.00 + tax per night and a REFUNDABLE pet deposit required. I-91 to exit 24, north on Silas Deane Hwy. Hotel is 3/4 mile on right.



**MOTEL 6**  
1341 Silas Deane Hwy. Wethersfield CT 860 563 5900  
\$48.00 + tax per night. No pet fee. Please mention that you are bringing a dog when you make your reservation. I-91 to exit 24, north on Silas Deane Hwy. Hotel is 1/2 mile on left.

**HOLIDAY INN EAST**  
363 Roberts Street East Hartford CT 860 528 9611  
\$99.00 + tax per night. \$25.00 pet fee plus a refundable \$25.00 deposit. I-84 to exit 58 - Roberts Street.

**CLARION SUITES**  
191 Spencer Street Manchester CT 860 643 5811  
\$99.00 + tax per night and \$10.00 per night pet fee. A refundable deposit of \$100.00 is required. I-84 to exit 59 - Spencer St. Left at end of exit then left at 3rd traffic light. Hotel is behind Friendly's. I-91 North or South to Route 291 to I-394 and then follow above directions.

## GENERAL RULES

1. All sanctioned classes are open to Jack Russell Terriers only.
2. Exhibitors and owners of terriers entered must be current JRTCA members and must not be a member of a conflicting JRT organization or register their JRTs in any all-breed registry or conflicting JRT organization. If an exhibitor is found to be in violation of this policy, entry will be disqualified and no refunds will be given. If a violation is confirmed after the trial, placements will be voided from all JRTCA records.
3. Exhibitors must submit a completed entry form including a signed waiver for every trial they enter. Entries must be within the 10-15: JFTCA height standard for all sanctioned classes (with the exception of pups who have not yet met the 10: height standard); measuring devices will be available on the trial grounds.
4. Puppies (under 12 months) are not eligible for championship in any division but their own. Puppies are eligible to compete only if they have reached their four-month birthday (i.e. not 16 weeks). A puppy's age is the actual age the pup is on the day of the trial.
5. Bitches in season may not compete in any division. Pre-entry fees of bitches in season will be refunded with a veterinarian certificate or as otherwise agreed upon by the Trial Administrator.
6. Spayed or neutered terriers may compete in Miscellaneous Conformation. They may not compete in Puppy, Family, Open or Working Conformation.
7. A terrier bred by a sanctioned JRTCA Judge may not be shown under that Judge in the Conformation division.
8. Terriers owned or co-owned by the Trial Chairperson or any member of their household may not be entered in any phase of the competition with the exception of Child and Youth Handling.
9. Terriers owned by judges may not be entered in any division in which they are judging but may enter the competition in any other division.
10. Terriers owned by stewards may be entered in any division provided that they find a substitute to perform their duties or have someone else show their terriers.
11. Requests for the measurement of a terrier being shown in any class may be made only by another exhibitor in that class or by the judge. These measurements will be considered the official height of the terrier in question. Requests made by spectators will not be honored. Only JRTCA height cards issued after September 1999 will be honored.
12. Excessive use of squeaky or fun-like baiting devices by exhibitors is prohibited in the Conformation ring and may result in the exhibitor being excused from the class. "Excessive use" will be at the Judge's discretion.
13. Exhibitors participating in the JRTCA Working Terrier Classes or Certificate Go-To-Ground must submit the appropriate JRTCA certificates with pre-entries or at the time of post entry. The Judge may require a copy of the certificate be presented to the ring/den steward at the time of judging. Registered terriers may submit a copy of NHC certificate signed by a JRTCA Working Judge within 30 days of the date it was issued.
14. Puppies under the age of three months are not permitted on the trial grounds. Any person violating this rule will be excused from all classes entered and asked to leave the trial site.
15. All dogs must be leashed or crated except when competition requires off-leash work. No liberty leashes allowed.
16. Overly aggressive dogs or an owner's failure to control his/her dog may result in disqualification at the discretion of the Judges or the Trial Administrator.
17. The abuse or server disciplining of dogs on the trial grounds is prohibited. Anyone displaying such behavior will be asked to leave the trial site and no entry fees will be refunded.
18. Dogs other than JRTs on the grounds may be excluded or permitted at the discretion of the Trial Administrator.
19. Exhibitors are responsible to double check the classes they have entered and be on time. No refunds will be given for missed classes.
20. The owner/handler of a terrier entering any class does so at his/her own risk and agrees to abide by the rules of the JRTCA and the trial. A copy of the JRTCA Rule Book can be obtained by contacting the JRTCA office (410-561-3655) or it can be downloaded from the JRTCA website ([www.terrier.com](http://www.terrier.com))
21. Unsportsmanlike conduct, or the use of foul and abusive language, will not be tolerated. Anyone demonstrating such conduct will be asked to leave the trial site and no entry fees will be refunded. In addition, such conduct will be subject to penalties, which may include the suspension of membership, restriction from entering the JRTCA National Trial, and/or fines. Trial Chairpersons have the right to refuse any entry at their sole and absolute discretion.
22. THE JUDGE'S DECISION CONCERNING PLACEMENTS ARE FINAL IN ALL DIVISIONS!

## Section 4 Barn Hunt - Non Sanctioned

An interactive competition for terriers and their handlers, working together to find the quarry (rat) in the hay bales in the shortest amount of time!

Class 158 Puppies 6-12 months

Class 159 Adults 10" up to 12½"

Class 160 Adults over 12½" up to 15"

Class 161 Veteran Dogs/Bitches, 6 yrs and older

Class 162 Beyond Geriatrics



**Class 163 Barn Hunt Champion and Reserve**

### Saturday Evening Dinner! "Marchetti's Kitchen"

Dinner will be served immediately after the Raffle in the Better Living building.

We are pleased to offer you the following selections:

- \* Ham & Bean Supper - sweet, homemade beans served with fresh cornbread!
- \* Pasta Primavera - made with fresh veggies and rich, buttery alfredo sauce!

Dinners come complete with garden salad, fresh bread, dessert, coffee/tea/soda.

**\$15.00 per person**

Please indicate which entrée you would prefer on the entry form.

### Hungry?

**Breakfast and Lunch for the weekend will be provided by the Hebron Lions Club!**

**Please support them and enjoy their hospitality!**



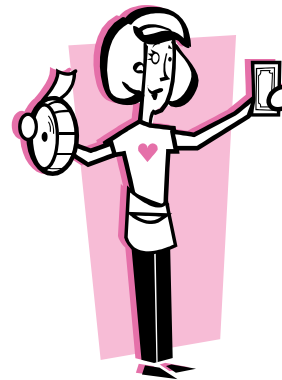
**Thank you Lions!**

### Trial Schedule: Saturday and Sunday

<b>Entry Desk opens:</b>	7:30 am
<b>Racing</b>	8:00 am PROMPTLY
<b>Conformation</b>	Following racing
<b>Trailing and Locating</b>	Following racing
<b>GTG and Super Earth</b>	Following racing
<b>Barn Hunt</b>	Following racing
<b>Agility</b>	Following racing
<b>Lure Coursing</b>	Following racing
<b>Ball Retrieval</b>	Following racing
<b>Raffle</b>	Following Conformation on Saturday only!

### Please support the Russell Rescue Raffle!

The terriers thank you!



**Russell Rescue, Inc. (RRI)** is a network of volunteers dedicated to placing unwanted or abandoned Jack Russells into permanent homes. The Network arranges for emergency rescues throughout the country, and gathers information designed to match appropriate permanent and temporary homes. It is funded by donations and supported by Jack Russell Terrier lovers and volunteers. [www.russellrescue.com](http://www.russellrescue.com)

## Facilities Available...

- ◆ Camping is allowed on the grounds!
- ◆ **Camper hookups for electricity: 115v - 20a service only! \$25/weekend. Please include payment with your entries.**
- ◆ Real bathrooms and showers are available on the grounds.
- ◆ Water for dogs is available on the grounds.

## General Notes!

- ◆ Ribbons awarded to 6th place. Trophies awarded for every class.
- ◆ All dogs **MUST** be leashed or crated except when competition requires off leash work.
- ◆ Please pick up your trash, clean up after your dogs and leave the grounds as clean as you found them.
- ◆ Puppies under 3 months of age are not allowed on the grounds. Persons violating this rule will be asked to leave the trial grounds and will not receive a refund on any entry fees.
- ◆ Abuse of dogs or severe disciplining of dogs on trial grounds is strictly prohibited.
- ◆ In compliance with JRTCA policy, refunds will only be given for bitches in heat (must have veterinary note) or demise of terrier. No exceptions will be made.

## Beyond Geriatrics - Non Sanctioned - Both Days!

No entry fee required...

- Class 9: Geriatric Flat Racing
- Class 26: Geriatric Low Hurdles Racing
- Class 93: Geriatric Conformation
- Class 114: Geriatric GTG
- Class 120: Geriatric Super Earth
- Class 141: Geriatric Trailing and Locating
- Class 157: Geriatric Ball Toss
- Class 162: Geriatric Barn Hunt



Let those old duffers have fun!  
Ribbons awarded 1st - 6th!



“NEW”

**Russell Rescue Perpetual Trophy**  
In memory of our dear friend  
Jeff Griffies.

To be awarded to the  
Adult Under Racing Champion on  
Saturday!

## Class 136 Jumpers

Consists of 12-17 jumps and/or tunnels with at least one lead change.  
Scoring is time plus faults, with lowest score getting 1st regardless of number of faults. Five faults for running course on-lead. Five faults for knocked bar, and off course. Fifteen faults for a missed obstacle. Qualifying score of 200 earns one leg toward a JRTCA Jumpers Certificate.

**Division G - Fun and Field - Champion and Reserve to be awarded each day for T/L, Lure Coursing and Barn Hunt!**

## Section 1 - Trailing and Locating - Non-Sanctioned

This event is off lead in an area of the nearby woods that is **NOT** fenced in. The terrier is judged on it's ability to follow a line in a simulated natural hunting environment, to locate and mark and open on the quarry.

Class 137 Puppies - 6 up to 12 months

Class 138 Adults - 10" up to 12½"

Class 139 Adults - over 12½" up to 15"

Class 140 Veteran - 6 years and older

Class 141 Beyond Geriatrics

Class 142 **Trailing and Locating Champion and Reserve**

## Section 2 - Lure Coursing - Non Sanctioned

**Open Field** - Timed event that sends your dog chasing full speed after a lure in a nearby field that is **NOT** fenced in...

Class 143 Puppies 6-12 months 10" up to 12½"

Class 144 Puppies 6-12 months over 12½" up to 15"

Class 145 Shorties Dogs/Bitches under 10½"

Class 146 Dogs 1 year and older, 10" up to 12½"

Class 147 Dogs 1 year and older, over 12½" up to 15"

Class 148 Bitches 1 year and older, 10" up to 12½"

Class 149 Bitches 1 year and older, over 12½" up to 15"

Class 150 Veteran Dogs/Bitches, 6 years and older, 10" up to 12½"

Class 151 Veteran Dogs/Bitches, 6 years and older, over 12½" up to 15"

Class 152 **Lure Coursing Champion and Reserve**

## Section 3 Ball Retrieval - Non Sanctioned

Use your ball or one of ours! Judged on best retrieval time based on 3 attempts...

Class 153 Puppies 6-12 months

Class 154 Adults 10" up to 12½"

Class 155 Adults over 12½" up to 15"

Class 156 Veterans Dogs/Bitches, 6 years and older

Class 157 Beyond Geriatric

### Class 125 Youth GTG

Open to any youth aged 10 thru 16, handling a Jack Russell Terrier. Judged on the youth's ability to present his/her dog and knowledge of GTG. To be run through the 10 foot Novice liner; time not considered.

### Class 126 Youth On-Lead Agility

Open to any youth aged 10 thru 16. To be run over the Novice Agility course. Time not to be considered. Judged on the youth's ability to handle his/her terrier and knowledge of agility.

### Class 127 Youth Off-Lead Agility

Open to any youth aged 10 thru 16. To be run over the Novice Agility course. Time not to be considered. Judged on the youth's ability to handle his/her terrier and knowledge of agility. May not cross-enter between On-Lead and Off-Lead Agility.

### Class 128 Youth Handler High Point and Reserve

Awarded to the highest scoring youth and runner up in Classes 124, 125 and 126 or 127. The points are awarded as follows: 1st = 8 points, 2nd = 6 points, 3rd = 5 points, 4th = 4 points, 5th = 3 points, 6th = 2 points and participation = 1 point. Exhibitors must compete in a minimum of Youth Handling and Youth GTG to qualify for the Youth High Score and Reserve. In the case of a tie, it will be broken by a handling class to be held in the Conformation Ring; judged by the Conformation Judge.

## Division F - Agility

### Class 129 Novice On-Lead

Open to terriers that have not scored above 190 points. This class is for the true beginner terrier with the intent of a pleasant experience on the basic agility equipment. Handlers that drag their terriers around will be seriously faulted. Course to include ramps, tunnels and various hurdles. Non-Certificate

### Class 130 Advanced On-Lead

Open to terriers who have previously achieved a score of 190 or better. Course the same as Novice On-Lead with the addition of the see-saw. Note: Terriers in Novice and Advanced On-Lead may not cross-enter into Off-Lead classes. Non-Certificate

### Class 131 Starters Agility: Off-Lead

Open to any adult terriers who have NOT scored 190 or higher in Starter's Agility. Course to include ramps, tunnels, various hurdles and see-saw. Qualifying score of 190 or better earns one leg toward JRTCA Agility I Certificate.

### Class 132 Agility I Certificate: Off-Lead

Open to terriers who have previously earned the first leg of Agility Certificate I in Starters Off-Lead. The last two legs of the Agility I Certificate are earned with two additional 190 qualifying scores in this class. Course the same as Starters Off-Lead.

### Class 133 Agility II Certificate: Off-Lead

More difficult course to include all of the Agility I equipment plus two more hurdles and weave poles. Qualifying score of 190 or better earns one leg toward JRTCA Agility II Certificate.

### Class 134 Agility III Certificate: Off-Lead

Course to include all the above, weave poles are increased to 12 and must end in a 'gamble'. Qualifying score will be 200 points

### Class 135 Agility High Score Champion & Reserve

To be awarded to the high score terrier and runner up combining scores of Agility II and Agility III.

## Division A - Racing

**All terriers** must be muzzled for racing. Handlers must supply muzzles. Closed-end muzzles required. No figure eight muzzles allowed. Puppy classes may be combined based on number of entries.

### Section I: Flat Races

Class 1 Dog & Bitch Pups: 4-6 month **Non Sanctioned**

Class 2 Pups: 6 up to 9 months, up to 12½"

Class 3 Pups: 6 up to 9 months, over 12½" up to 15"

Class 4 Pups: 9 up to 12 months, up to 12½"

Class 5 Pups: 9 up to 12 months, over 12½" up to 15"

Class 6 Shorties Dogs/Bitches under 10½" **Non Sanctioned**

Class 7 Senior Dogs/Bitches, 9 up to 12 years, 10" up to 12½"

Class 8 Senior Dogs/Bitches, 9 up to 12 years, over 12½" up to 15"

Class 9 Beyond Geriatrics, over 12yrs **Non Sanctioned**

Class 10 Dogs: 1 year and older, 10" up to 12½"

Class 11 Dogs: 1 year and older, over 12½" up to 15"

Class 12 Bitches: 1 year and older, 10" up to 12½"

Class 13 Bitches: 1 year and older, over 12½" up to 15"

Class 14 Veteran Dogs, 6 years and older, 10" up to 12½"

Class 15 Veteran Dogs, 6 years and older, over 12½" up to 15"

Class 16 Veteran Bitches, 6 years and older, 10" up to 12½"

Class 17 Veteran Bitches, 6 years and older, over 12½" up to 15"

---

### Section 2: Steeplechase (Hurdles) Races

*Puppies, Shorties, Seniors and Beyond Geriatrics over low hurdles up to 8"*

Class 18 Dog & Bitch Pups: 4-6 month **Non Sanctioned**

Class 19 Pups: 6 up to 9 months, up to 12½"

Class 20 Pups: 6 up to 9 months, over 12½" up to 15"

Class 21 Pups: 9 up to 12 months, up to 12½"

Class 22 Pups: 9 up to 12 months, over 12½" up to 15"

Class 23 Shorties Dogs/Bitches under 10½" **Non Sanctioned**

Class 24 Senior Dogs/Bitches, 9 up to 12 years, 10" up to 12½"

Class 25 Senior Dogs/Bitches, 9 up to 12 years, over 12½" up to 15"

Class 26 Beyond Geriatrics **Non Sanctioned**

Class 27 Puppy Champion and Reserve up to 12½"

*Open to 1st place winners of Classes 2, 4, 19, 21*

Class 28 Over 12½" up to 15" Puppy Championship

*Open to 1st place winners of classes 3, 5, 20 & 22*

Class 29 10" up to 12½" Senior Championship

*Open to 1st place winners of classes 7 & 24*

Class 30 Over 12½" up to 15" Senior Championship

*Open to 1st place winners of classes 8 & 25*

Adults over high hurdles 8" to 16"

- Class 31 Dogs: 1 year and older, 10" up to 12½"
- Class 32 Dogs: 1 year and older, over 12½" up to 15"
- Class 33 Bitches: 1 year and older, 10" up to 12½"
- Class 34 Bitches: 1 year and older, over 12½" up to 15"
- Class 35 Veteran Dogs, 6 years and older, 10" up to 12½"
- Class 36 Veteran Dogs, 6 years and older, over 12½" up to 15"
- Class 37 Veteran Bitches, 6 years and older, 10" up to 12½"
- Class 38 Veteran Bitches, 6 years and older, over 12½" up to 15"

### Section 3: Championship Run-Offs

No entry fee required. Adult and Veteran run-offs immediately following Class 38.

- Class 39 10" up to 12½" Adult Championship  
*Open to 1st place winners of classes 10, 12, 31, & 33*
- Class 40 Over 12½" up to 15" Adult Championship  
*Open to 1st place winners of classes 11, 13, 32, & 34*
- Class 41 10" up to 12½" Veteran Championship & Reserve  
*Open to 1st place winners of classes 14, 16, 35, & 37*
- Class 42 Over 12½" up to 15" Veteran Championship & Reserve  
*Open to 1st place winners of classes 15, 17, 36, & 38*

### Division B - Conformation

#### Section I: 4 - 6 Month Puppy Conformation

- Class 43 Dog Pups - 4 up to 6 months - smooth
- Class 44 Dog Pups - 4 up to 6 months - rough/broken
- Class 45 Bitch Pups - 4 up to 6 months - smooth
- Class 46 Bitch Pups - 4 up to 6 months - rough/broken
- Class 47 **Best 4 - 6 month Puppy & Reserve**  
*Open to 1st and 2nd place winners in classes 43-46*

#### Section 2: JRTCA Working Terriers

Open to any JRTCA registered terrier owned by a JRTCA member which holds a JRTCA Natural Hunting Certificate. A copy of the terrier's NHC must be submitted with pre-entry or submitted to conformation ring steward at time of class. Terriers entering the Working section may not cross enter in the Open Section; no cross-entering is permitted within the Working Section.

- Class 48 Bronze Medallion Dog  
*Open to any dog which has earned the JRTCA Bronze Medallion for Special Merit in the Field.*

### Division D - Super Earth

- Class 115 Puppies 6-12 months  
*Open to Jack Russell puppies 4 up to 6 months of age. 90 seconds to reach quarry.*
- Class 116 Open Adult 10" up to 12½"  
*Open to Jack Russells 10" up to 12½" which have scored 100% in Open GTG class at this or a previous JRTCA trial. 90 seconds to reach quarry.*
- Class 117 Open Adult over 12½" up to 15"  
*Open to Jack Russells over 12½" up to 15" which have scored 100% in Open GTG class at this or a previous JRTCA trial. 90 seconds to reach quarry.*
- Class 118 Open Veterans 10" up to 12½"  
*Open to Jack Russells over 6 years of age which have scored 100% in Open GTG class at this or a previous JRTCA trial. 90 seconds to reach quarry.*
- Class 119 Open Veterans over 12½" up to 15"  
*Open to Jack Russells over 6 years of age which have scored 100% in Open GTG class at this or a previous JRTCA trial. 90 seconds to reach quarry.*
- Class 120 Beyond Geriatrics - Non Sanctioned  
*Open to any adult JRT over 12 years who holds a JRTCA Trial Certificate.*
- Class 121 **Adult Champion Super Earth Certificate**  
*Open to any adult JRT 10" up to 15" 1 year and over which holds a JRTCA Super Earth Trial Certificate. 30 seconds per 30 feet of tunnel to reach the quarry; may leave the earth and re-enter several times; work for 1 minute. A copy of the Certificate must be submitted with pre-entry or be shown to the Den Steward at the time of the class. First and second place winners will be Adult Super Earth Champion and Reserve.*
- Class 122 **Veteran Champion Super Earth Certificate**  
*Open to any Veteran JRT 10" up to 15" 6 years and over which holds a JRTCA Super Earth Trial Certificate. 30 seconds per 30 feet of tunnel to reach the quarry; may leave the earth and re-enter several times; work for 1 minute. A copy of the Certificate must be submitted with pre-entry or be shown to the Den Steward at the time of the class. First and second place winners will be Veteran Super Earth Champion and Reserve.*

### Division E - Youth \$8.00 class for each class entered!

Classes 123 and 124 will be held immediately following completion of racing before any other conformation classes.

- Class 123 Child Handler  
*Open to any youth aged 5 thru 9, handling a Jack Russell Terrier, six months or older. This class is offered as an introductory experience in handling and learning about the JRT. Judged on the child's ability to present his/her dog and beginning knowledge of the JRT. Quality of the dog NOT to be considered.*
- Class 124 Youth Handler  
*Open to any youth aged 10 thru 16, handling a Jack Russell Terrier, six months or older. This class is offered as an introductory experience in handling and learning about the JRT. Judged on the child's ability to present his/her dog and beginning knowledge of the JRT. Quality of the dog NOT to be considered.*

### Class 106 Open Puppy

Open to Jack Russells 6 up to 12 months of age which have scored 100% in Novice GTG class at this or a previous JRTCA trial. Not open to any puppies which have previously achieved 100% in this class. Puppies earning a score of 100% at this trial may, upon payment of the entry fee, enter the Puppy Championship GTG class at this trial. (30 seconds to reach quarry; may leave earth and re-enter once; work quarry for 1 minute).

### Class 107 Puppy Championship

Open to Jack Russells 6 up to 12 months of age which have scored 100% in an Open GTG class at this or a previous JRTCA trial. A copy of a 100% Open score sheet must be submitted with pre-entry or be shown to the Den Steward at the time of the class. First and second place winners will be Puppy GTG Champion and Reserve. (30 seconds to reach quarry; may leave earth and re-enter once; work quarry for 1 minute).

### Class 108 Novice Adult

Open to Jack Russells one year and older which have not scored 100% in this class at a previous JRTCA trial. Entries earning a score of 100% at this trial may, upon payment of the entry fee, enter the Open class at this trial. (One minute to reach the quarry; may leave earth and re-enter several times; work quarry for 30 seconds).

### Class 109 Open Adult

Open to Jack Russells 1 year and older which have scored 100% in Novice GTG class at this or a previous JRTCA trial. (30 seconds to reach the quarry; may leave earth and re-enter once; work quarry for 1 minute).

### Class 110 10" up to 12½" Champion Certificate

Open to any adult JRT 10" up to 12½", 1 year and over which holds a JRTCA Trial Certificate. A copy of the Certificate must be submitted with pre-entry or be shown to the Den Steward at the time of the class. First and second place winners will be GTG Champion and Reserve. (30 seconds to reach quarry; may not leave the earth; work quarry for 1 minute)

### Class 111 Over 12½" up to 15" Champion Certificate

Open to any adult JRT 12½" up to 15" 1 year and over which holds a JRTCA Trial Certificate. A copy of the Certificate must be submitted with pre-entry or be shown to the Den Steward at the time of the class. First and second place winners will be GTG Champion and Reserve. (30 seconds to reach quarry; may not leave the earth; work quarry for 1 minute)

### Class 112 Veteran 10" up to 12½" Champion Certificate

Open to any adult JRT 6 years and older who holds a JRTCA Trial Certificate. Cross entering is not permitted between certificate classes. (30 seconds to reach quarry; may not leave the earth; work quarry for 1 minute)

### Class 113 Veteran Over 12½" up to 15" Champion Certificate

Open to any adult JRT 6 years and older who holds a JRTCA Trial Certificate. Cross entering is not permitted between certificate classes. (30 seconds to reach quarry; may not leave the earth; work quarry for 1 minute)

## Section 2: Non Sanctioned

### Class 114 Beyond Geriatrics GTG

Open to any adult JRT over 12 years



### Class 49 Working Terrier Dog 10" up to 12½" - smooth

### Class 50 Working Terrier Dog 10" up to 12½" - rough/broken

### Class 51 Working Terrier Dog over 12½" up to 15" - smooth

### Class 52 Working Terrier Dog over 12½" up to 15" - rough/broken

### Class 53 Veteran Working Terrier Dog

Open to any working JRT 6 years or older

### Class 54 Best Working Terrier Dog & Reserve

Open to 1st and 2nd place winners of classes 48 - 53

### Class 55 Bronze Medallion Bitch

Open to any bitch which has earned the JRTCA Bronze Medallion for Special Merit in the Field.

### Class 56 Working Terrier Bitch 10" up to 12½" - smooth

### Class 57 Working Terrier Bitch 10" up to 12½" - rough/broken

### Class 58 Working Terrier Bitch over 12½" up to 15" - smooth

### Class 59 Working Terrier Bitch over 12½" up to 15" - rough/broken

### Class 60 Veteran Working Terrier Bitch

Open to any working JRT 6 years or older

### Class 61 Best Working Terrier Bitch & Reserve

Open to 1st and 2nd place winners of classes 55 - 60

### Class 62 Working Terrier Champion & Reserve

Open to 1st and 2nd place winners of classes 54 & 61

## Section 3: 6 - 12 Month Puppy Conformation

### Class 63 Dog Pups - 6 up to 9 months - smooth

### Class 64 Dog Pups - 6 up to 9 months - rough/broken

### Class 65 Dog Pups - 9 up to 12 months - smooth

### Class 66 Dog Pups - 9 up to 12 months - rough/broken

### Class 67 Best 6 - 12 month Dog Puppy & Reserve

Open to 1st and 2nd place winners in classes 63-66

### Class 68 Bitch Pups - 6 up to 9 months - smooth

### Class 69 Bitch Pups - 6 up to 9 months - rough/broken

### Class 70 Bitch Pups - 9 up to 12 months - smooth

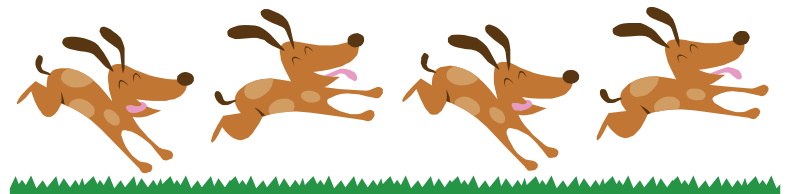
### Class 71 Bitch Pups - 9 up to 12 months - rough/broken

### Class 72 Best 6 - 12 month Bitch Puppy & Reserve

Open to 1st and 2nd place winners in classes 68-71

### Class 73 Puppy Conformation Championship & Reserve

Open to 1st and 2nd place winners in classes 67 & 72



## Section 4: Open Adult Conformation

No cross entering is permitted within the Open section. Terriers entering the Open Section may not cross enter in the Working Section.

- Class 74 **Bred by Exhibitor Dog**  
*Open to any adult Jack Russell Terrier owned and bred by the exhibitor; must be handled by the breeder under whose kennel prefix the terrier is registered or a member of the breeder's immediate family.*
- Class 75 Dogs, 1 year and older 10" up to 12½" - smooth
- Class 76 Dogs, 1 year and older 10" up to 12½" - rough/broken
- Class 77 Dogs, 1 year and older over 12½" up to 15" - smooth
- Class 78 Dogs, 1 year and older over 12½" up to 15" - rough/broken
- Class 79 **Best Dog & Reserve**  
*Open to 1st and 2nd place winners of class 74-78*
- Class 80 **Bred by Exhibitor Bitch**  
*Open to any adult Jack Russell Terrier owned and bred by the exhibitor; must be handled by the breeder under whose kennel prefix the terrier is registered or a member of the breeder's immediate family.*
- Class 81 Bitches, 1 year and older 10" up to 12½" - smooth
- Class 82 Bitches, 1 year and older 10" up to 12½" - rough/broken
- Class 83 Bitches, 1 year and older over 12½" up to 15" - smooth
- Class 84 Bitches, 1 year and older over 12½" up to 15" - rough/broken
- Class 85 **Best Bitch & Reserve**  
*Open to 1st and 2nd place winners of class 80-84*
- Class 86 **Best Open Terrier & Reserve**  
*Open to 1st and 2nd place winners of class 79 & 85*

## Section 5: Family

- Class 87 **Stud Dog and Get**  
*Open to sire with at least two, but not more than three off spring at parent's side. Judged on Breed Standard and consistency of type. Stud dog must be an intact male; offspring may be intact or spayed/neutered.*
- Class 88 **Brood Bitch and Produce**  
*Open to dam with at least two, but not more than three off spring at parent's side. Judged on Breed Standard and consistency of type. Brood bitch must be an intact female; off spring may be intact or spayed/neutered.*
- Class 89 **Best Family & Reserve**  
*Open to 1st and 2nd place winners in classes 87 & 88*

## Section 6: Miscellaneous

Open to any adult JRT including those spayed and neutered.

- Class 90 **Spayed/Neutered Working Terrier**  
*Open to any adult Spayed/Neutered Jack Russell Terrier which holds a JRTCA Natural Hunting Certificate*
- Class 91 **Neutered Dog**  
*Open to adult neutered terriers judged on Breed Standard*

- Class 92 **Spayed Bitch**  
*Open to adult spayed terriers judged on Breed Standard*
- Class 93 **Beyond Geriatrics - terriers over 12 yrs old**
- Class 94 **Veteran Dog**  
*Open to any dog six years and older. Judged on Breed Standard and the condition of the dog.*
- Class 95 **Veteran Bitch**  
*Open to any bitch six years and older. Judged on Breed Standard and the condition of the bitch.*
- Class 96 **Best Veteran and Reserve**  
*Open to 1st & 2nd place winners of classes 94 & 95*
- Class 97 **Red Fox Suitability**  
*The terrier the judge would most like to take hunting to red fox.*
- Class 98 **Groundhog Suitability**  
*The terrier the judge would most like to take hunting to groundhog.*
- Class 99 **Raccoon Suitability**  
*The terrier the judge would most like to take hunting to raccoon.*
- Class 100 **Tool Box**  
*Open to handler with 3 adult JRTs at side. One suitable to each quarry: (Groundhog, Fox, Raccoon/Badger). Placement placed on the group the judge would choose to take hunting.*

## Section 7: New England Bred

Adult terrier considered bred in New England in the New England state in which the owner of the bitch was residing at the time of breeding

- Class 101 **New England Bred Dog**
- Class 102 **New England Bred Bitch**



- Class 103 **Best New England Bred Terrier**  
*Open to 1st and 2nd place winners of Class 101 & 102.*

## Division C - Go To Ground

### Section I:

- Class 104 **Pre-Novice Puppy**  
*Open to Jack Russell puppies 4 up to 6 months of age. Entry in Pre-Novice Puppy class does not affect the puppy's eligibility to enter Novice Class after 6 months of age. (One minute to reach quarry; mark quarry for 15 seconds; may leave earth and re-enter several times).*
- Class 105 **Novice Puppy**  
*Open to Jack Russells 6 up to 12 months which have not scored 100% in this class at a previous JRTCA trial. Entries earning a score of 100% at this trial may, upon payment of entry fee, enter the Open Puppy Class at this trial. (One minute to reach quarry; may leave earth and re-enter several times; work quarry for 30 seconds).*